

# Community Health Sciences MPH Program Overview

UCLA Fielding  
School of Public Health

1

## UCLA Highlights



2

## FSPH Fast Facts



5 Departments



7 Degrees



1,000  
Students



33% BIPOC



18 Research  
Centers

3

## Community Health Sciences

The Department of Community Health Sciences is the academic department within the UCLA Fielding School of Public Health (FSPH) concerned with social and behavioral research applied to health, health promotion, and public health practice. Our focus is on programs, policies, and actions that can promote health in the context of social, cultural, political, economic, and environmental factors. Of particular interest is how social and cultural factors, social programs, the health care system, and social policies influence health beliefs and perceptions, health behaviors, and health status within populations. The department prides itself on its reputation of academic excellence and stellar research activities.

4

# Application

---

- SOPHAS & UCLA Graduate Division Applications
  - Application Components
    - Transcripts
    - Letters of recommendation
      - Mix of academic & professional references preferred
    - Statement of purpose
    - Personal statement
    - Resume
    - GRE scores (waived)
    - TOEFL (if applicable)
- 

# What Goes in a Statement of Purpose?

---

- Discussion of substantive interests
  - Any research and/or relevant work experience
  - Statement of career goals (what you will do with an MPH in CHS)
  - Reasons in applying to this specific department (why you want the MPH in CHS)
-

## Major Elements of the Program

---

- 60 units of course work
  - PH Core Classes (20 unites)
    - PH 200 A and B (16 units)
      - Covers epidemiology, biostatistics, environmental health, health policy and management, community health sciences
    - PH 401 (4 units)
      - Public health as a profession
  - CHS Core courses (20 units)
    - CHS 210 Foundations of Community Health Sciences (8 units)
    - CHS 211AB Program Planning, Implementation, Research and Evaluation (8 units)
    - Fieldwork in CHS (in collaboration with VA rotations) (4 units)
  - Content specific areas (12 units)
  - Electives (8 units)
    - These can be in any department within FSPH or across UCLA with prior approval

## Core Faculty Areas of Interest

---

- Health and aging; older populations' health
- Health equity and structural racism
- Social determinants of health
- Global sexual and reproductive health
- Maternal and child health
- Health communication; risk communication
- Nutrition and food-related behaviors
- Psychosocial stress and coping
- Intimate partner violence; gender-based violence
- Social epidemiology
- Homelessness

## Research Centers

### Sampling of UCLA Centers



9

## Student Groups at FSPH

- CHS Student Association
- Public Health Student Association
- Students of Color for Public Health
- Reproductive Health Interest Group
- Maternal and Child Health Interest Group
- Public Health Nutrition Club
- Mobile Clinic Project at UCLA
- Built Environment & Public Health Council

10

## Other Student Involvement

---

- CHS offers quarterly department lunches open to all students, staff, and faculty
  - Annually, a faculty member will host dinner for all students, staff, and faculty at their home
  - One doctoral student representative attends biweekly CHS departmental faculty meetings
  - FSPH Equity, Diversity, and Inclusion Committee is open to all students, staff, and faculty
  - Graduate students are encouraged to serve as mentors through different UCLA programs
  - UCLA Graduate Student Association has annual positions open to all graduate students
- 

11

For questions about the CHS/DI program, contact:


Adrian Aini  
Student Affairs Officer  
Community Health Sciences  
UCLA Fielding School of Public Health  
[aaini@ph.ucla.edu](mailto:aaini@ph.ucla.edu)

For questions about admission, contact: [chssao@ph.ucla.edu](mailto:chssao@ph.ucla.edu)

Connect with FSPH @uclafsph on Facebook, Instagram, Twitter

---

12



**UCLA Partners in Excellence for Leadership in MCH Nutrition**

**VAGLA DI Open House**  
 Dena Herman, PhD, MPH, RD  
 Adjunct Associate Professor  
 Director, UCLA MCH Nutrition Leadership Training Program  
 UCLA Fielding School of Public Health  
 September 16, 2024

**UCLA FIELDING SCHOOL OF PUBLIC HEALTH**

13

## What is the MCH Nutrition Leadership Training Program?



<https://mchnutritionpartners.ucla.edu/>

**NUTRITION IN MCH LEADERSHIP TRAINING**

The Western Maternal and Child Health Nutrition Partners are a group of academic faculty and public health nutrition practitioners who are dedicated to improving the health of women, children

14

## What do you 'receive' by being an MCH Nutrition Leadership Trainee?

- Traineeship/mentorship in conjunction with the UCLA FSPH MPH Program
- Connection to network of trainees in 6 other MCH Nutrition Leadership Training programs and MCH Nutrition Leaders (professionals) in the 13 Western States
- Attendance at two conferences
  - Washington, DC
  - Los Angeles or in 13 Western States
- Funding
  - Stipend
  - Work and field opportunities
  - Certified Lactation Counselor (CLC) training
  - Systems training: I + PSE training modules
  - Policy training



15

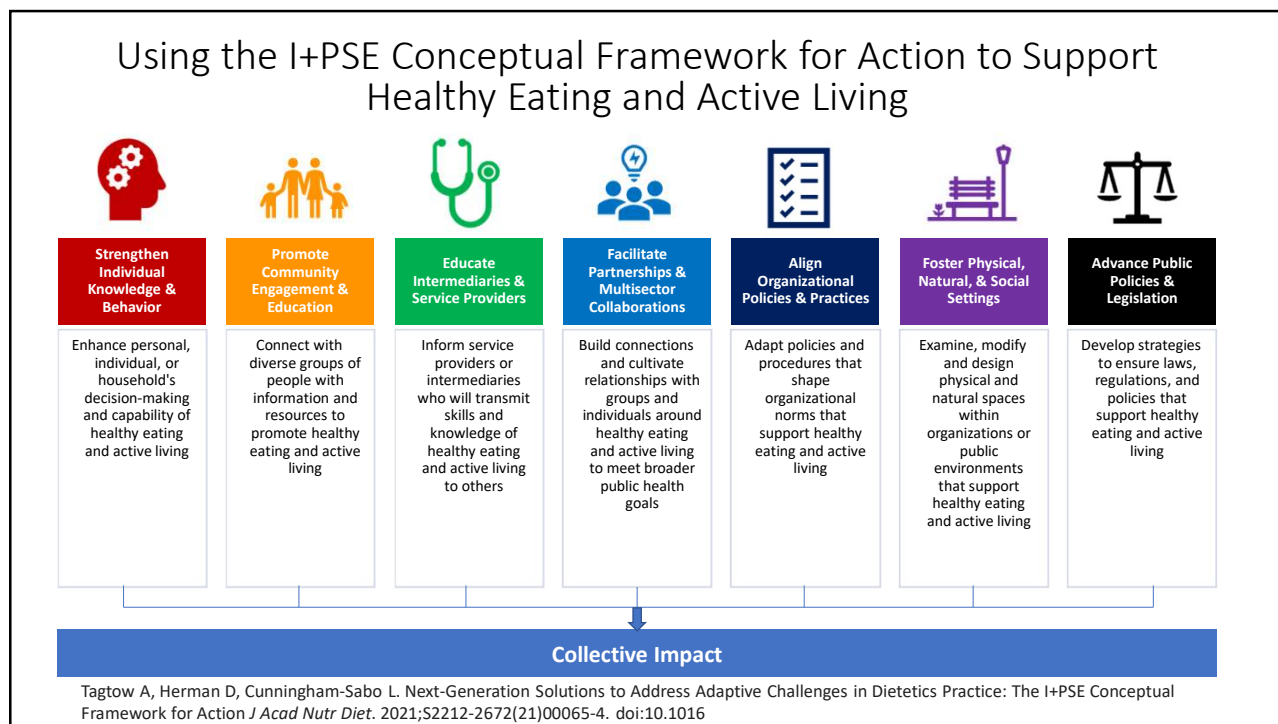
## What are Requirements to Complete the Traineeship?

- Coursework (discussed in conjunction with past experience and MPH program)
- Completion of I + PSE Short Course Modules
- Weekly meetings with UCLA trainees
- Leadership of the Public Health Nutrition Club
- Attendance at two MCH Nutrition Leadership conferences



16





17

## How do you Apply to the Traineeship?

1. Complete the application form (available from DI Director)
2. Criteria for MCH Nutrition Leadership Training Program
  - Acceptance to the MPH Program at UCLA FSPH
  - Demonstrated experience and interest in MCH populations
  - Professional goals related to working with MCH populations
  - Two references

18

## Questions?

Dena Herman, PhD, MPH, RD

Email: [dherman@ucla.edu](mailto:dherman@ucla.edu)

Website: <https://mchnutritionpartners.ucla.edu/>